

# ISE-JINGU Naiku

## Scenery of Isuzu River

Walking on the dry bed of the Isuzu river, running roughly parallel with the Oharaimachi street, lets you relax while leaving behind the urban noise. Enjoy the beauty of the cherry blossoms in the spring, the changing colors of the leaves in the fall. Wild birds skim low over the water's surface and slip into the water searching for food while colorful carp swim gracefully near Naiku.

## Currency exchange vending machine

Automatic currency exchange machine is located inside the store — accepts 13 different foreign currencies including USD, EUR, GBP, KRW, CNY, THB.



## Sugidama 杉玉

A fresh green cedar ball hanging under the eaves of a sake brewery signals that new sake was brewed, and when the leaves turn completely brown, it announces the sake is ready to drink.

## Matsujiro-no-mise 松治郎の舗

A beehive box filled with live honey bees is displayed at the store entrance.

## Yamanaka heart pharmacy

The cute elephant figurine is the mascot character of a pharmaceutical company.



# OMOTENASHI ISE-JINGU Naiku OHARAI-MACHI OKAGE-YOKOCHO Walking MAP

## Senokuniya 勢乃国屋

Short term baggage storage service — for FREE.

## "Umashikuni" Tourist Information

美し国観光ステーション  
You can get free visitors guides, brochures and travel publications written in English. Information for optional excursions may be given to those who can communicate in Japanese.

## "Naikumae" bus stop

乗合自動車内宮前驛(内宮前/バス停)  
Short term baggage storage service — at the store located inside the bus station building, on the right side of the main entrance.

## Swallows

つばめ  
In the spring and early summer, swallows return to build their nests under the eaves of shops. In this area, people take good care of swallow because it is considered good luck for them to nest on their buildings.

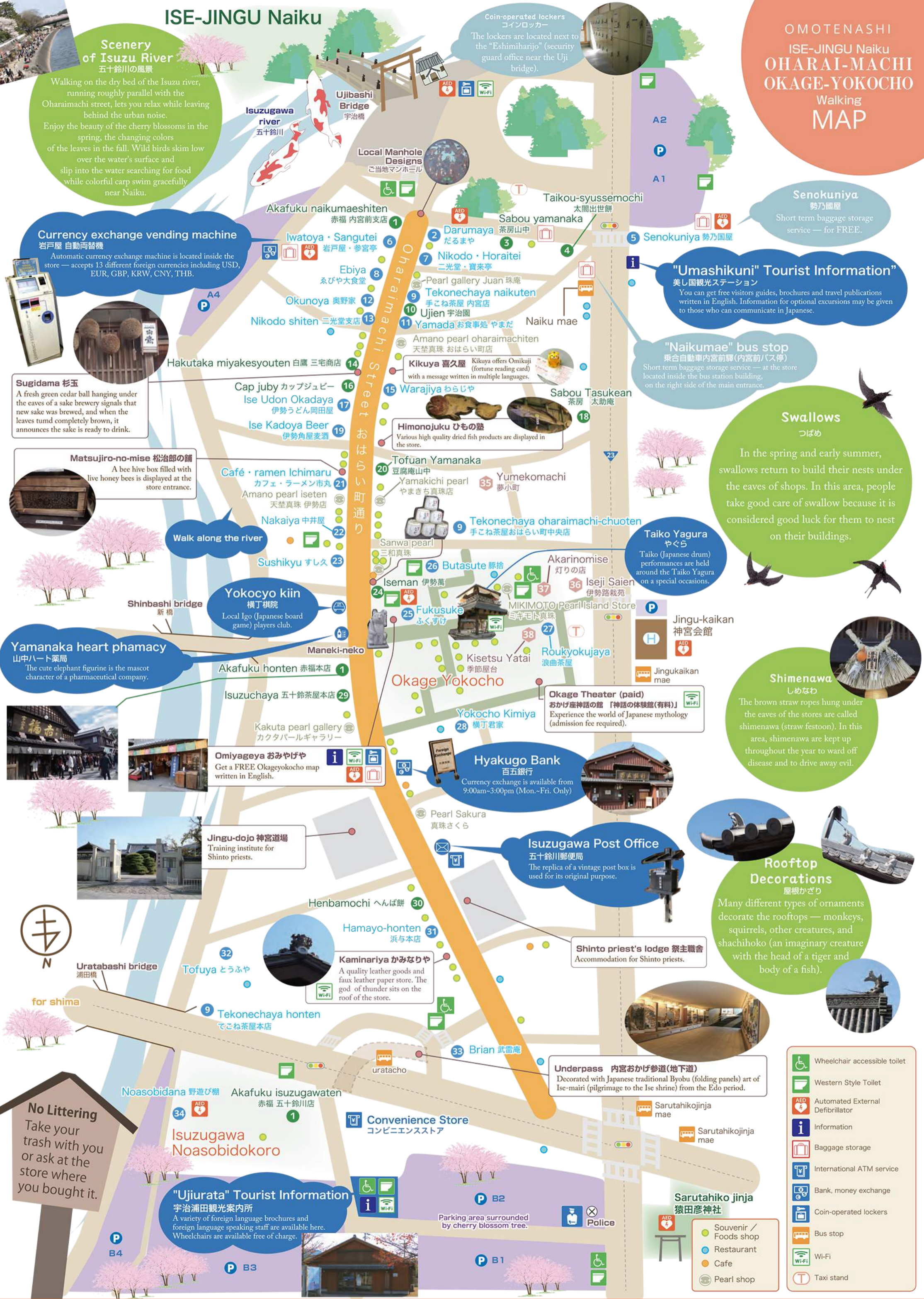
## Shimenawa

しめなわ  
The brown straw ropes hung under the eaves of the stores are called shimenawa (straw festoon). In this area, shimenawa are kept up throughout the year to ward off disease and to drive away evil.

## Rooftop Decorations

屋根かざり  
Many different types of ornaments decorate the rooftops — monkeys, squirrels, other creatures, and shachihoko (an imaginary creature with the head of a tiger and body of a fish).

- Wheelchair accessible toilet
- Western Style Toilet
- Automated External Defibrillator
- Information
- Baggage storage
- International ATM service
- Bank, money exchange
- Coin-operated lockers
- Bus stop
- Wi-Fi
- Taxi stand



## "Ujiurata" Tourist Information

宇治浦田観光案内所  
A variety of foreign language brochures and foreign language speaking staff are available here. Wheelchairs are available free of charge.

## Underpass 内宮おかげ参道(地下道)

Decorated with Japanese traditional Byobu (folding panels) art of Ise-mairi (pilgrimage to the Ise shrine) from the Edo period.

## Isuzugawa Post Office

五十鈴川郵便局  
The replica of a vintage post box is used for its original purpose.

## Hyakugo Bank

百五銀行  
Currency exchange is available from 9:00am-3:00pm (Mon.-Fri. Only)

## Shinto priest's lodge

祭主職舎  
Accommodation for Shinto priests.

## Sarutahiko jinja

猿田彦神社

## Convenience Store

コンビニエンスストア

## Parking area

Surrounded by cherry blossom tree.

## Isuzugawa Noasobidokoro

五十鈴川野遊び棚